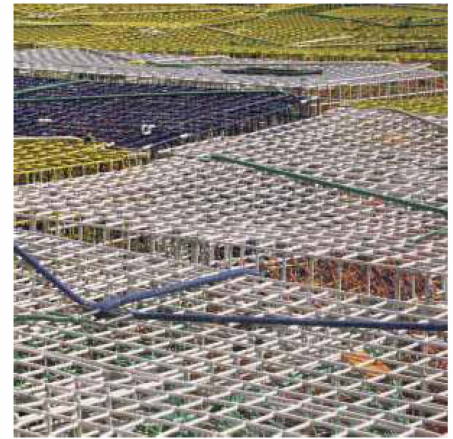




TRAPCORD



TRAP CORD is specifically designed for the demands of the lobster and crab fishery. Used for door closures and other components, Novabraid Trap Cord, is available in two cover styles. Our standard Polyester cover is white with black and teal markers. Multifilament polypropylene covers are also available in a variety of bright colors and camo. Stock MFP colors are orange with black markers and black with orange markers. Both cover styles are braided over our premium round white latex core strands yielding 85% to 100% stretch even when subjected to freezing conditions. Novabraid Trap Cord is normally shipped on cardboard reels but is available in custom put ups or cut lengths.

Diameter		Net Weight/Reel		Ft./Reel	Stock Code			
Inch	mm	Lbs.	Kg.		White w/ B&T Fleck	Black w/ Orange Fleck	Orange w/ Black Fleck	Camo
1/8"	3	3.0	1.36	500	45000			45097
3/16"	4	6.56	2.97	500	45002			45093
1/4"	6	12.86	5.82	500	45004	45077	45078	45095
5/16"	8	18.11	8.2	500	45006	45079	45080	45099
3/8"	10	13.4	6.07	250	45012			45103
1/2"	12	19.5	8.83	250	45013			
5/8"	16	21.0	9.51	150	46034			
3/4"	18	34.5	15.63	150	46040			

Features:

- Premium Latex
- Uniform Performance
- Continuous Length Reels

Suggested Uses:

- Trap Components
- Industrial Tie Downs
- Hunting & Camping



Manufactured by Novatec Braids Ltd.
234 Water Street, Yarmouth
Nova Scotia, Canada B5A 4P8



www.novabraid.com
1-800-565-4212